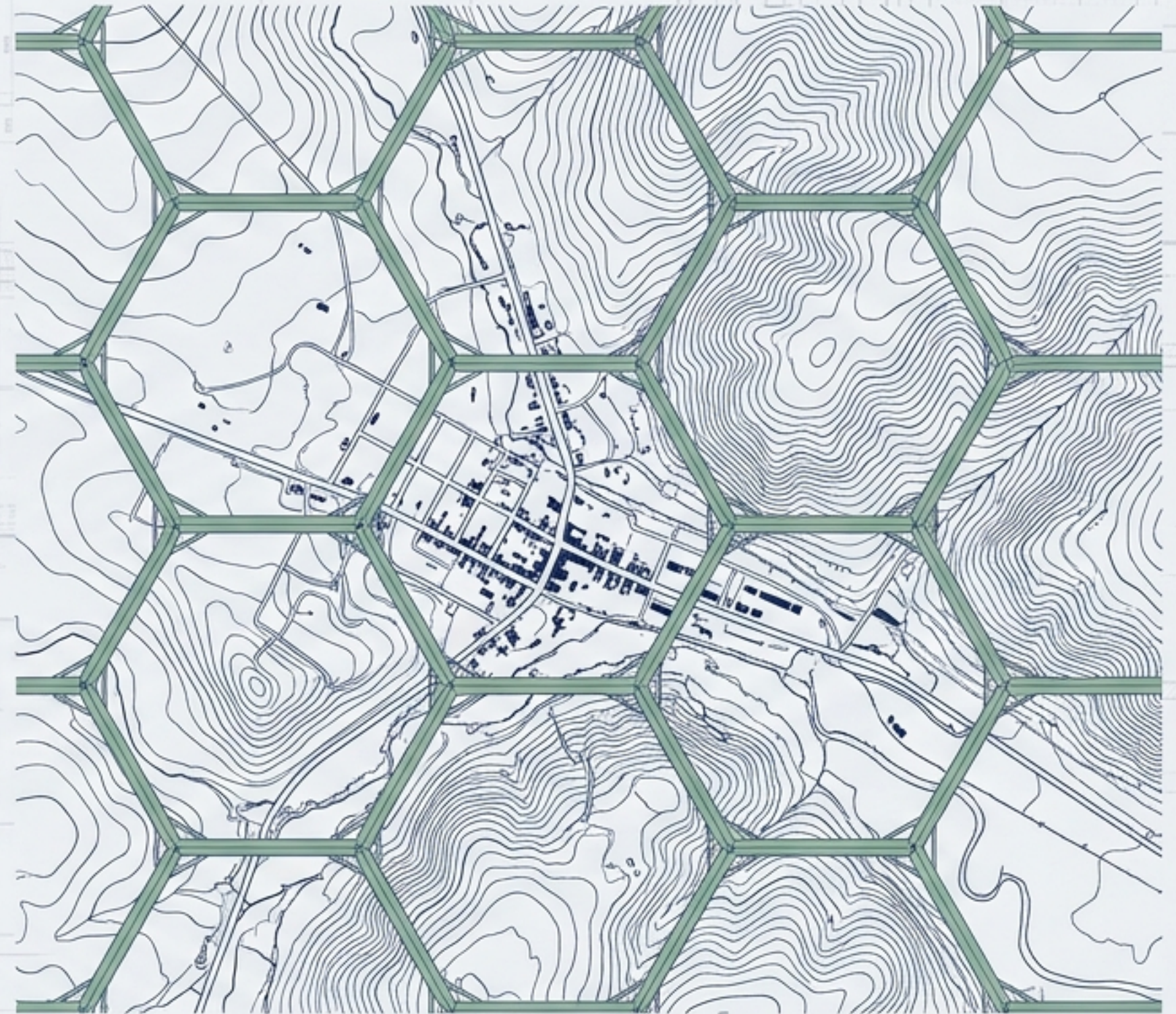


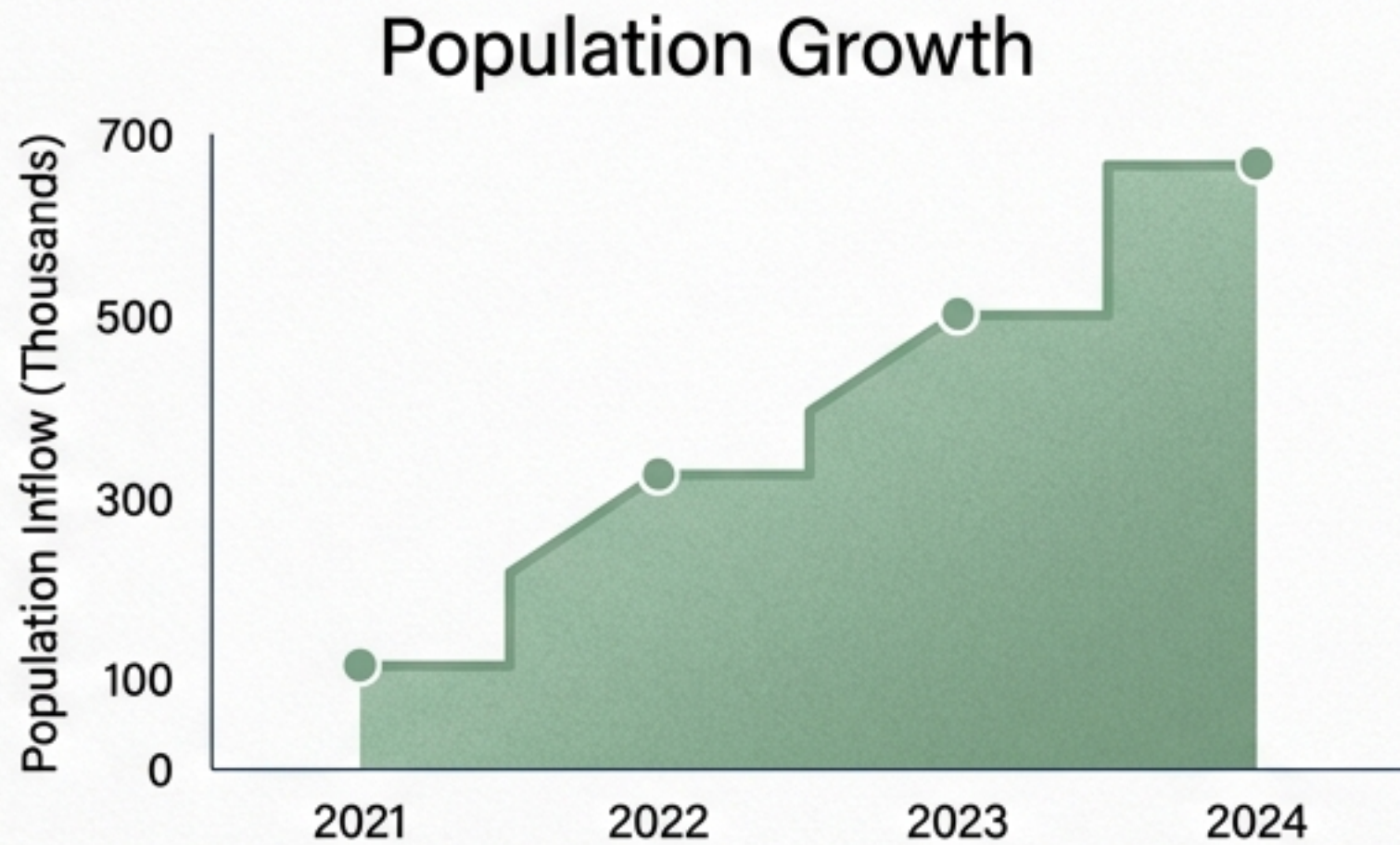
The Sovereign City Blueprint

Securing the Digital Borders
of Rural America with the
DeReticular Nexus Package



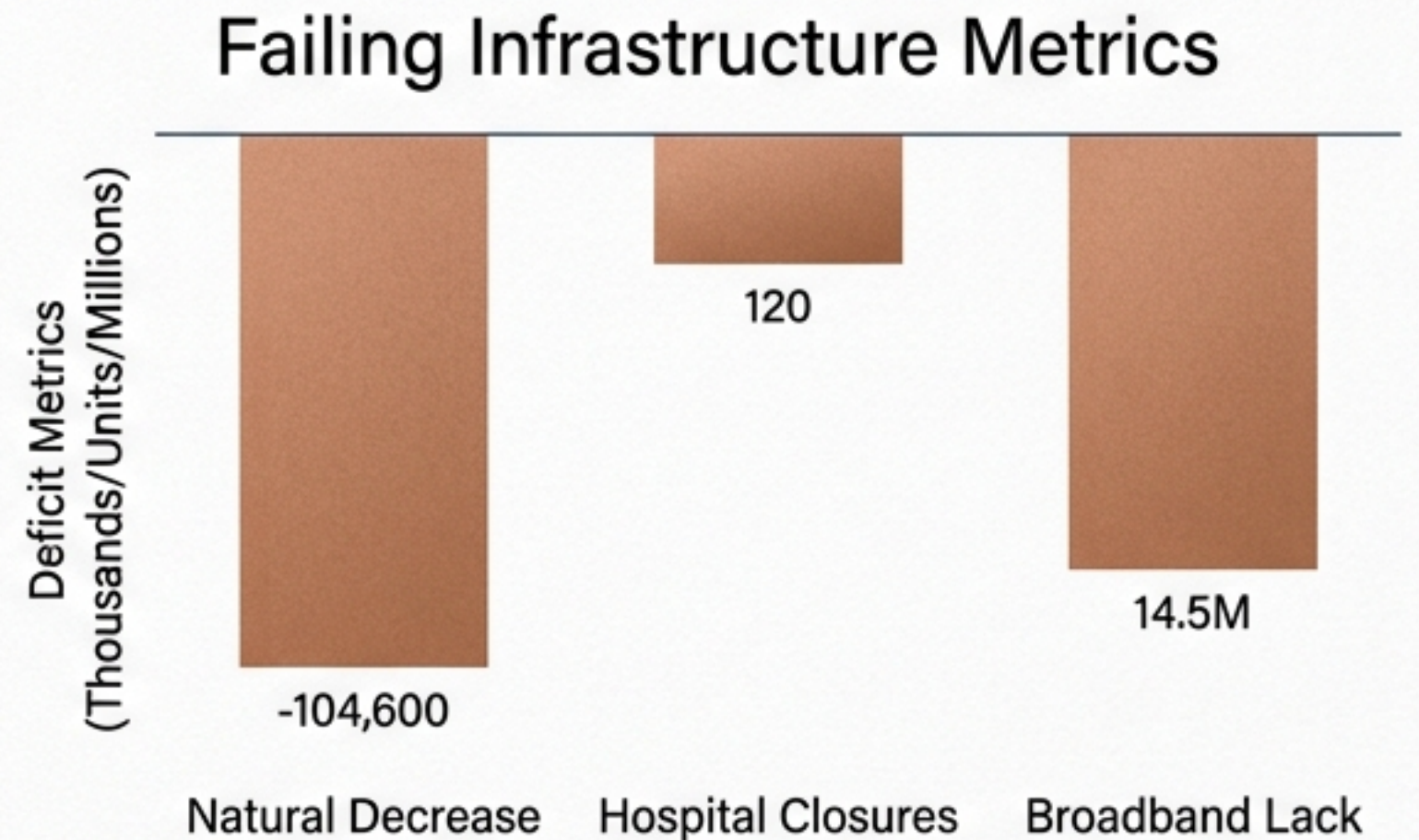
TARGET DEPLOYMENT: Populations 1,000–3,000
CLASSIFICATION: Enterprise Municipal Briefing
STATUS: Active

The Rural Rebound vs. The Infrastructure Deficit



The Influx

- +670,000 domestic net inflow to rural counties (2021-2024).
- Driven by remote work and recreation economies (now 41% of rural jobs).

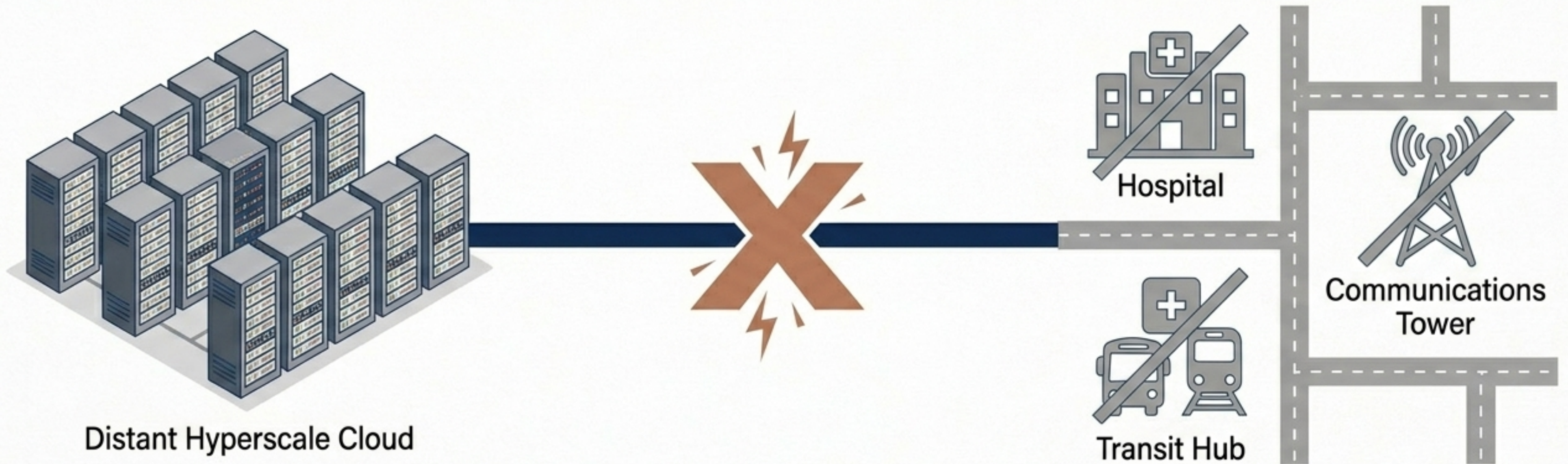


The Deficit

- -104,600 natural decrease (aging demographics).
- 120 rural hospital closures (2010-2020).
- 14.5 million rural Americans lack baseline broadband.

Insight: The era of factory-recruitment is over. Survival now depends on place-based civic infrastructure that supports aging populations and digital economies.

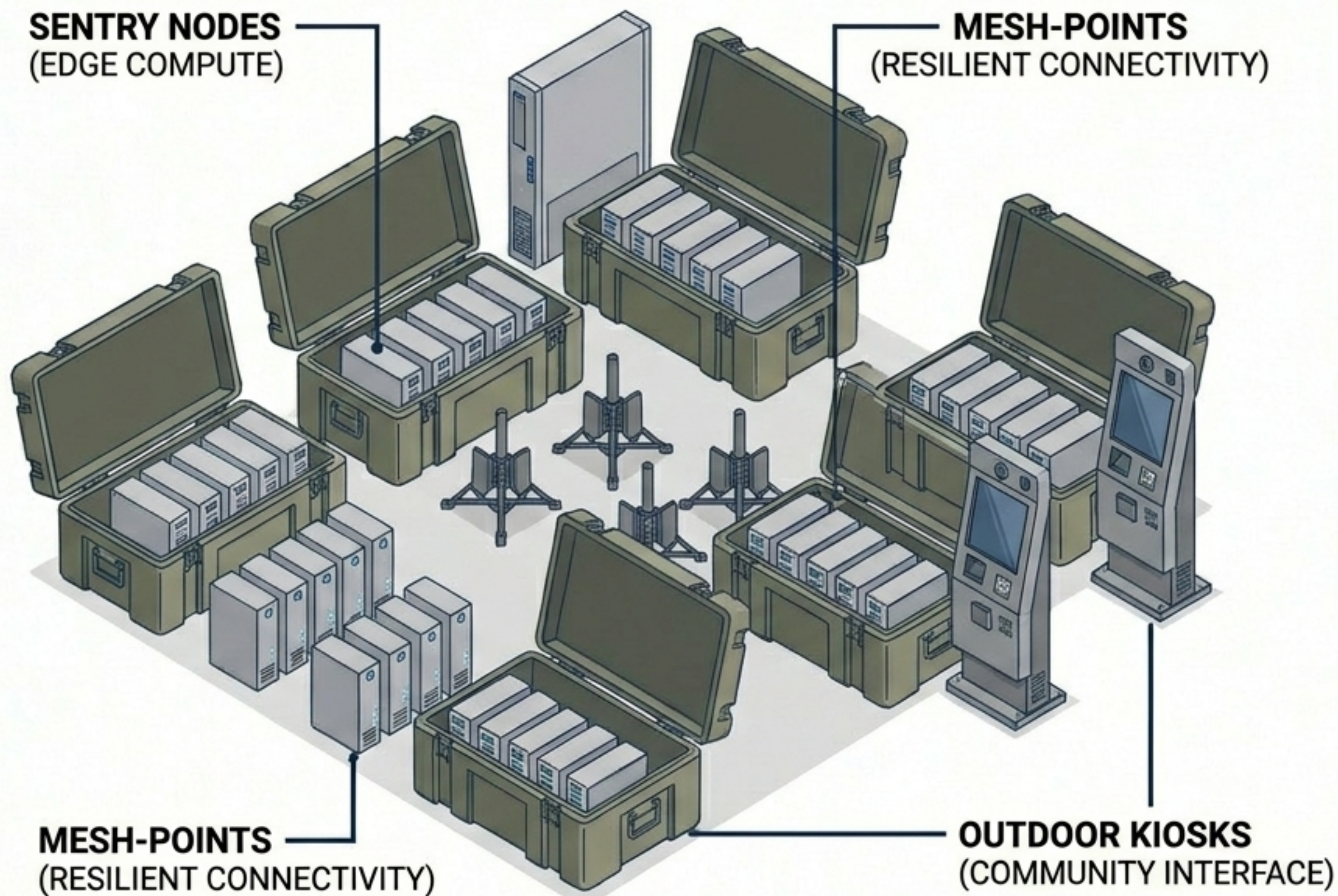
The Macro-Internet Vulnerability



Small towns currently rent their digital infrastructure from distant Big Tech clouds. This is an extractive relationship that turns essential services into liabilities.

The Threat: If the macro-internet or macro-grid fails, localized operations halt entirely. Municipalities cannot afford a centralized point of failure.

The City-in-a-Box Solution



SKU: SOV-BNDL-CITY
PRICE: \$129,999.00
LICENSE: Enterprise
Perpetual Fleet

A massively scaled, turnkey deployment that replaces fragile cloud dependencies with a unified, air-gapped municipal operating system.
Zero monthly SaaS fees.

The Software Brain: RIOS & The Trinity Stack

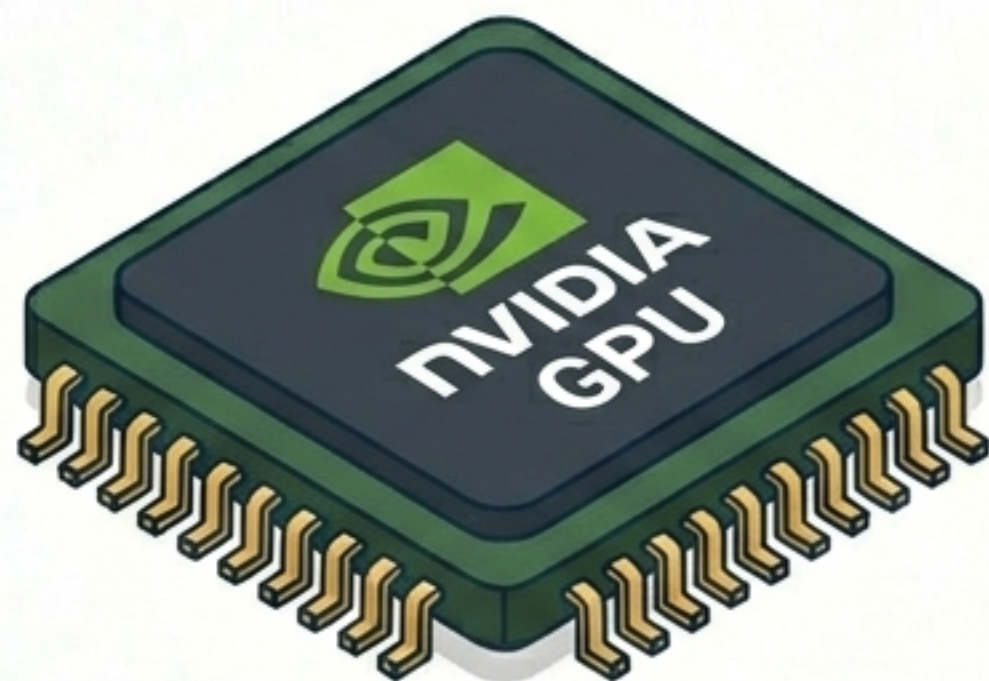
The Rural Infrastructure Operating System (RIOS) uses a Type-1 hypervisor to run isolated virtual environments on rugged edge hardware.



- **Layer 3:** Kali Linux automated vulnerability scanning, actively hunting internal intrusions.
- **Layer 2:** Ubuntu-based localized notary and P2P decentralized data store.
- **Layer 1:** pfSense firewall securely bonds disparate external connections (Starlink/LTE).

Air-Gapped Intelligence: The OpenClaw Framework

Powered by onboard **GPUs** and **quantized 4-bit Llama 3 models**, the town processes complex logic entirely **locally** without remote APIs.



Industrial Foreman: Translates logic into physical action; manages power micro-grids and heavy machinery.



Field Medic: Secures and processes sensitive healthcare telemetry natively.



Sovereign Elector: Cryptographically verifies localized voting terminals and democratic infrastructure.

Hardware Roots of Trust: Solving the Oracle Problem

Step 1: RF Fingerprinting



Software-defined radios scan microscopic manufacturing imperfections, instantly rejecting unauthorized simulated devices.

Step 2: Hardware Cryptography



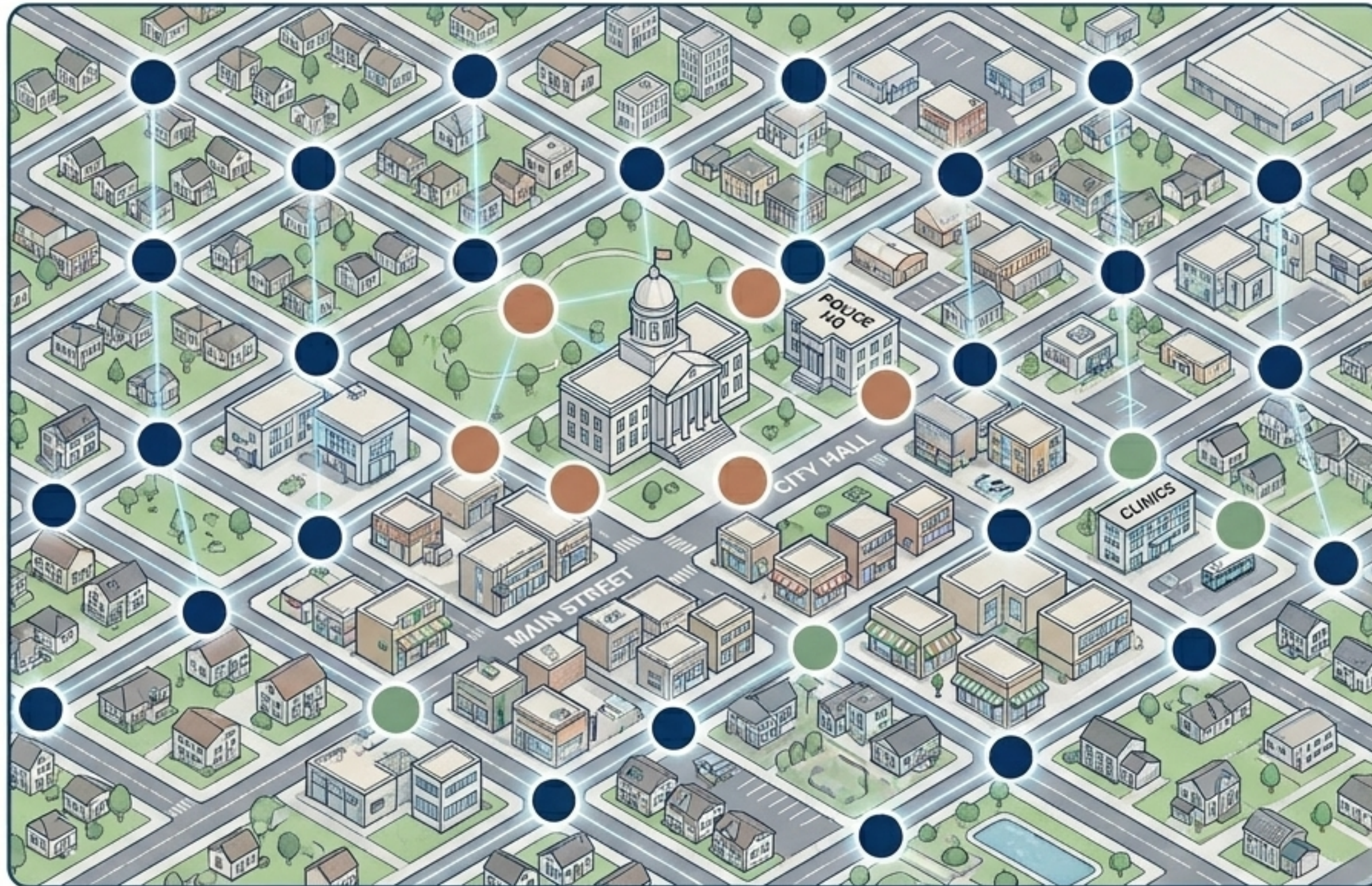
Data is signed at the exact moment of ingestion via a non-exportable private key burned into a **factory-sealed TPM 2.0 chip**.

Step 3: Immutable Local Ledger



Result: Every piece of municipal data is anchored to absolute, verified physical truth.

The Deployment Map: Blanketing the City



Hardware Fleet Breakdown (57 Units)



Core (6 Units):
2x 3-Node High-Capacity Sentry Pro Clusters.
Active-Active redundant root CAs placed at City Hall and Police HQ.



Mesh (36 Units):
Nomad Mesh-Point Routers creating an un-killable Wi-Fi 6E / LoRaWAN canopy across the municipality.

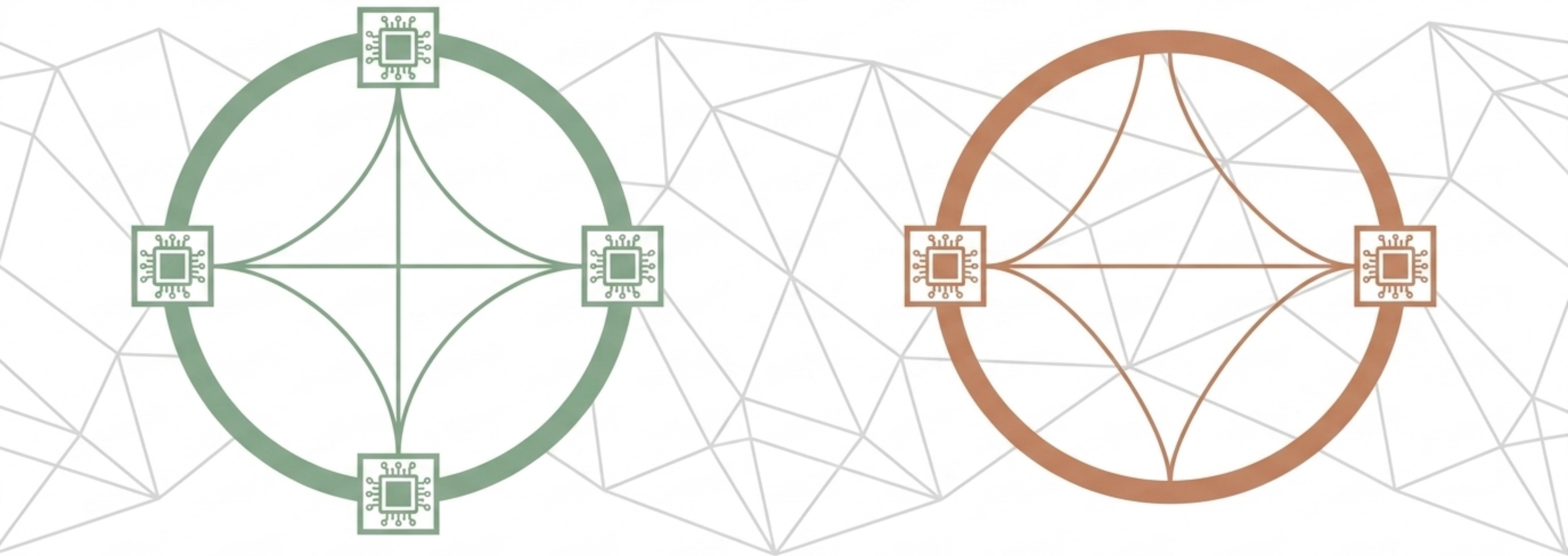


Edge (15 Units):
Specialized nodes distributed across Medical, Legal, Transit, and Tourism sectors.

Pillar 1: Professional Sub-Nets (Healthcare & Legal)

Mechanism: Segregation via Segmented CA Certificates

Sub-nets are programmed to drop any packet not signed by their specific Sub-CA.



Medical (4 Sentry Nodes): Local Whisper AI for patient dictation and OCR. Cross-clinic encrypted referrals bypass the public web entirely, remaining strictly HIPAA-compliant.

Legal (2 Sentry Nodes): High-security attorney-client privilege, automated contracts, encrypted localized VoIP.

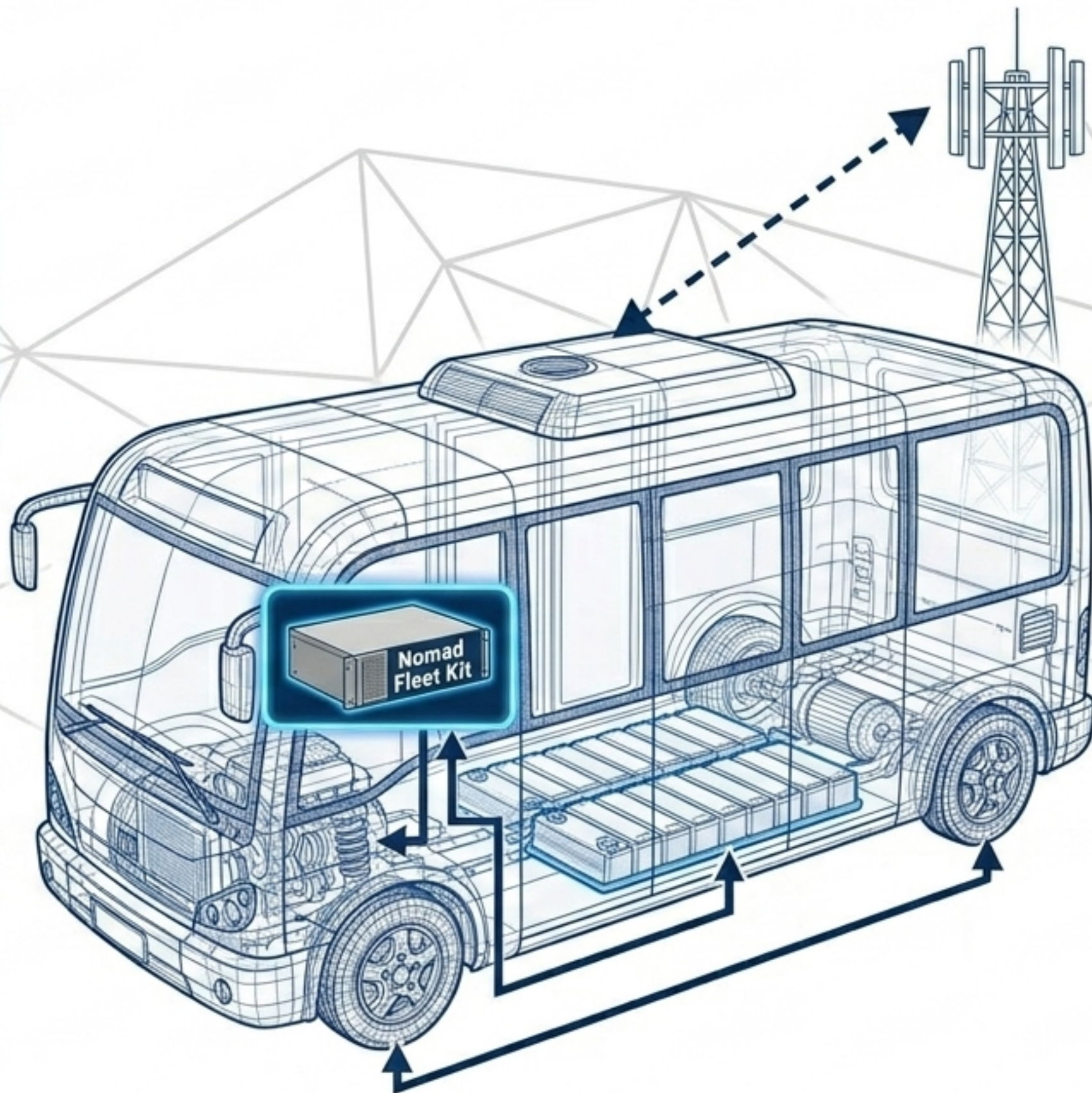
Pillar 2: Autonomous Transit & Logistics

The Circulatory System:

6 Nomad Mobile Edge Servers run the Industrial Foreman AI natively on local shuttles and maintenance vehicles.

Capabilities:

Manages route geofencing, battery load balancing, and autonomous dispatch entirely offline.



Impact:

Directly solves the rural Non-Emergency Medical Transportation (NEFT) crisis for aging populations without relying on external GPS routing.

Pillar 3: Civic & Tourism Gatekeepers

Deployment:

3 Ruggedized Municipal Kiosks running the Sovereign Executive LLM.



Local Economic Engine:

24/7 localized voice concierge. Books local restaurants and hospitality natively, stripping out extractive Airbnb/Expedia middleman fees.

Vault Warden Security:

Integrates LiDAR-based volumetric monitoring of key public squares and transit stops without streaming video to the cloud.

The Paradigm Shift Matrix

	Status Quo (Cloud-Dependent)	DeReticular (Sovereign City)
Infrastructure Model	Rented SaaS Cost Center	Community-Owned Perpetual Asset
Uptime Dependency	100% reliant on fragile macro-grid	Spherical Resilience (Island Mode)
Data Privacy	Exported to Big Tech	Cryptographically localized & air-gapped
Failover Response	Complete system halt	Active-Active clustering (downshifts to LoRaWAN)
Economic Impact	Extractive wealth drain	Circular, machine-to-machine local economy

Implementation Timeline: Hybrid Fulfillment



1. Consultation & Minting

Enterprise engineers map city topography; master SHA-256 Root CA is generated.



2. Warehouse Staging

57 units pre-flashed, mesh-tested, and palletized into 8 weather-sealed crates.



3. Freight Delivery

Dedicated LTL freight securely shipped to municipal receiving.



4. Ignition

Local utility workers mount Mesh-Points; nodes auto-discover the central mesh instantly.

Reclaiming Sovereignty: The ROI of the Autonomous City



The Aha Moment:

A town does not need to wait for a federal broadband grant to modernize. You can create an un-killable, closed-loop intranet canopy today.

Upcycling the Footprint:

The \$129,999 Nexus Package transitions municipal IT from a cyclical sunk cost into a highly secure, revenue-generating, machine-to-machine economy.

Human Capital Engine:

Supported by the DeReticular Academy, local talent is empowered to maintain the RIOS platform. Reclaim your digital and physical borders. Lead the rural rebound.